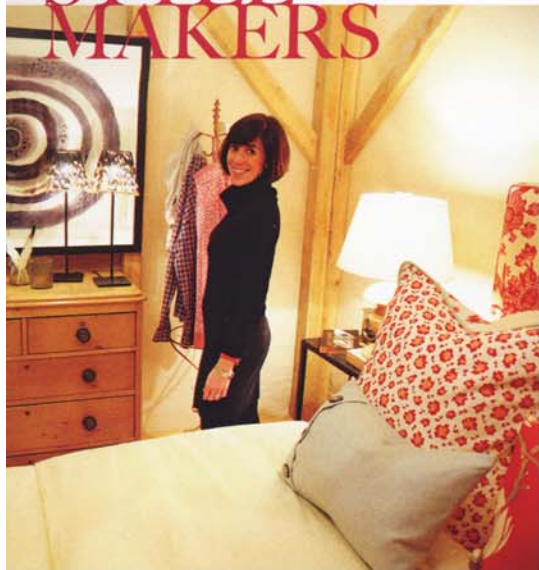


STYLE MAKERS



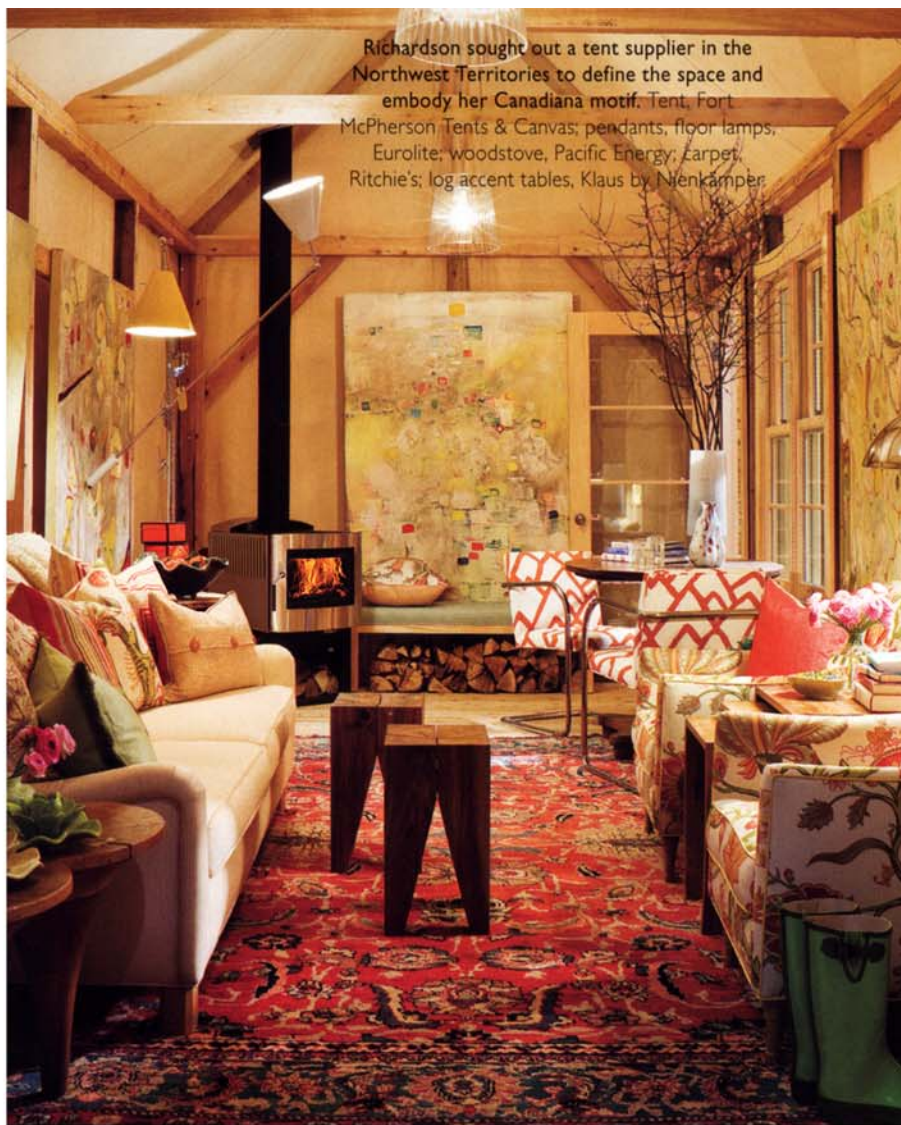
SARAH RICHARDSON'S COUNTRY RETREAT

How did you achieve country without the usual clichés? It's part country and part contemporary, like juxtaposing a rustic pine table with classic Mies van der Rohe chairs upholstered in graphic white and orange oversized fabric. This space is about giving a polished twist to an otherwise rustic mix.

Is colour the new taupe? Cream and white are my tried and true, but there's such a playful exuberance to vibrant patterns and juicy colours that create a happy exuberance.

Why a retreat? The more fast-paced our world becomes, the more we want personal space and downtime. I have a cottage on an island in Georgian Bay that's solar-powered and off the grid; I wanted to express that sensibility.

Where did the materials come from? I strive to support buying quality Canadian goods and I wanted to make sure my installation would leave no garbage behind when the show closed. Everything you see can be repurposed. We used horse-drawn lumber from a small family-run sawmill, upholstered goods made locally, Canadian-made faucets and tub, and the work of Canadian artists. — L.M.



Richardson sought out a tent supplier in the Northwest Territories to define the space and embody her Canadiana motif. Tent, Fort McPherson Tents & Canvas; pendants, floor lamps, Eurolite; woodstove, Pacific Energy; Carpet, Ritchie's; log accent tables, Klaus by Nienkämper



TOP LEFT: Artisanal lamps and a floral upholstered headboard make for a romantic getaway; graphic artwork injects a serious note. Fabrics, Bilbrough & Co.; lamps, Absolutely Inc.

LEFT: Acid-green walls bring an otherwise muted natural scheme to life. The curved tub lends a European aesthetic. Tub, Caml-Tomlin; mirror frame, Abraham's Antiques; towels, Cambridge Towel; pendants, Absolutely Inc.

ABOVE: A cosy outdoor seating arrangement gets its contemporary hit from the sleek lines of Richardson's custom outdoor furniture.