

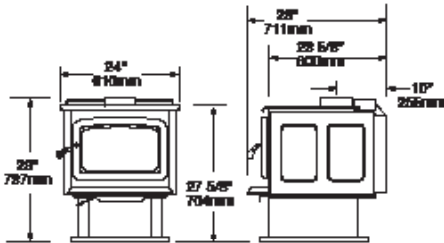


SUPER 27HD

FOR MEDIUM TO LARGE SPACES



UNIT DIMENSIONS



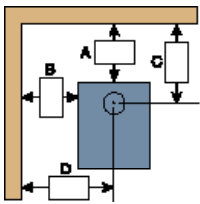
TECHNICAL DATA

38,200 BTU EPA Test Fuel

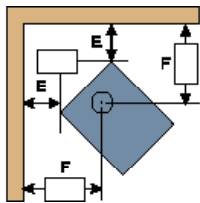
Efficiency (HHV)	71.3%
Emissions	1.8 gm/hr.
Log Size (recommended)	16"
Log Size (max)	18"
Firebox Size	2.1 cu.ft.
Glass Viewing Area	122 sq.in.
Weight	355 lb..

CLEARANCES TO COMBUSTIBLES

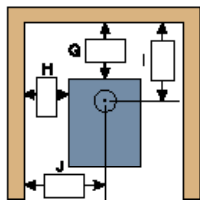
From top of stove to ceiling: **56"**



STRAIGHT



CORNER



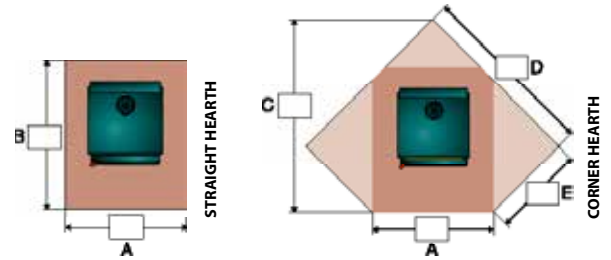
ALCOVE

	RESIDENTIAL SINGLE WALL	RESIDENTIAL DOUBLE WALL	MOBILE HOME DOUBLE WALL
A	8"	5"	5"
B	14"	14"	14"
C	18"	15"	15"
D	26"	26"	26"

E	7"	4"	4"
F	21"	18"	18"

G	N/A	5"	5"
H	N/A	14"	14"
I	N/A	15"	15"
J	N/A	26"	26"

FLOOR PROTECTOR DIMENSIONS



	MINIMUM	RESIDENTIAL SINGLE WALL	RESIDENTIAL DOUBLE WALL	ALCOVE DOUBLE WALL	MOBILE HOME
CANADA	A	39"	39"	39"	39"
	B	50 5/8"	50 5/8"	47 5/8"	47 5/8"
	C	-	61 5/8"	57 5/8"	-
	D	-	57 1/2"	54 1/2"	-
	E	-	29 7/8"	26 7/8"	-

USA	A	39"	39"	39"	39"
	B	50 5/8"	50 5/8"	47 5/8"	47 5/8"
	C	-	61 5/8"	57 5/8"	-
	D	-	57 1/2"	54 1/2"	-
	E	-	29 7/8"	26 7/8"	-